
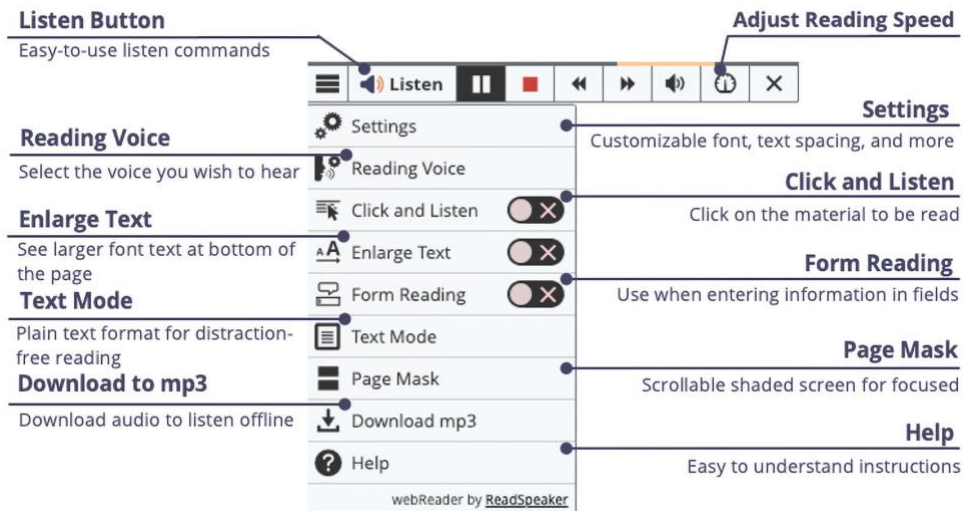




ReadSpeaker for Canvas: Why Should I Use It?

ReadSpeaker tools are more than just text to speech. They also give the ability to process information differently. Examples:

- If you learn by an oral presentation, use ReadSpeaker to listen to your lessons.
- If you are studying a complex subject, listen to the material while you are reading the material. The two processes of seeing the words (highlight words and sentences with ReadSpeaker) and hearing the words are a form of bimodal presentation. Bimodal presentations have been shown to increase the retention of materials. Enlarged text with a slower reading speed also helps learn difficult materials by allowing time to digest the material in smaller quantities.
- If you are taking a test, you may benefit from hearing the test to help you remember the words and understand the questions better.
- Learning on the go: You can download your lesson pages as MP3 files and listen to them offline. The download to MP3 button is on the lower toolbar.
-  When you click this tab, located on the left side of your screen, you will activate ReadSpeaker. Then, you can position the player on the page you desire.
- You can change the reading speed, highlight the text, or download the file. Customize it to your learning methodology!
- Pictured on the next page is the ReadSpeaker webReader.



Easily Distracted While Reading?

- Select the Page Mask, available in ReadSpeaker webReader and ReadSpeaker docReader: When activated, the page mask tool grays out the screen above and below the selected material. It will scroll with you as you move down the page. You can customize the width of the window. 
- Use ReadSpeaker docReader with the course content documents and select the Reading Ruler. When activated, the reading ruler tool grays out the material below it. The ruler's width is customizable. Use it like a note card on a paper document or book. 
- Do you need to adjust the font, font size, background/text color, or character spacing? If so, use Text Mode and make the adjustments to your preferences.
- Do you have low vision, are easily distracted, or are learning a second language? Use the Enlarge Text tool, which magnifies the text and shows it at the bottom of the page. The eye is naturally drawn to it. For second language learners, adjust your reading speed to a lower number, between 85 and 95.

There are many other ways to use the ReadSpeaker Suite of Learning Tools to aid your learning!

Embedded Link

Bimodal Presentation: <https://www.readspeaker.com/learn-more/report-benefits-bimodal-content-presentation/>