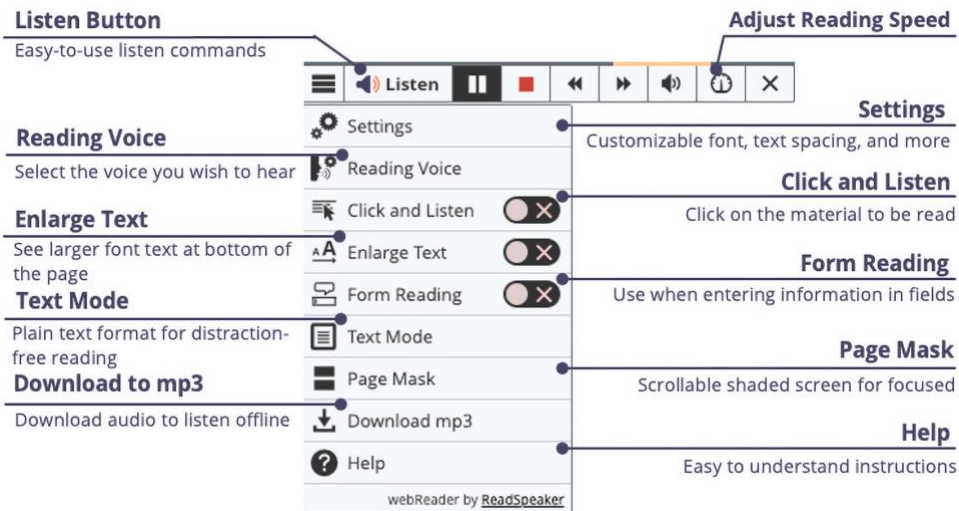


# ReadSpeaker for Brightspace: Why Should I Use It?



ReadSpeaker tools are more than just text-to-speech software. They also give the ability to process information differently. Examples:

- If you learn by an oral presentation, use ReadSpeaker to listen to your lesson/s.
- If you are studying a complex subject, listen to the material while you are reading the material. The two processes of seeing the words (highlight words and sentences with ReadSpeaker) and hearing the words are a form of bimodal presentation. Bimodal presentations have been shown to increase the retention of materials. Enlarged text with a slower reading speed also helps learn complex materials by allowing time to digest the material in smaller quantities.
- If you are taking a test, you may benefit from hearing the test to catch all the words and understand the questions better.
- Learning on the go: Download your lesson pages to mp3 files and listen to them while offline. Use the download to mp3 button, which is found on the lower toolbar.
- Click the Listen Button, which activates ReadSpeaker. You can then position the player on the page where you desire.
- You can change the reading speed, the text highlighting, or download the file. Customize it to your learning methodology!

See the next page for an image of ReadSpeaker webReader with explanations for each tool.



## Easily Distracted While Reading?

- Select the Page Mask available in ReadSpeaker webReader and ReadSpeaker docReader. When activated, the page mask tool grays out the screen above and below the selected material. In ReadSpeaker webReader, you can select the colors for the focus and mask areas. It will scroll with you as you move down the page. You can customize the width of the window. 
- Use ReadSpeaker docReader with the course content documents and select the Reading Ruler. When activated, the reading ruler tool grays out the material below it. The width of the ruler is customizable. Use it like a note card on a paper text document or book. 
- Do you need to adjust the font, font size, background/text color, or character spacing? If so, use Text Mode and make the adjustments to your preferences.
- Low vision or easily distracted? Use the Enlarge Text tool, which magnifies the text and shows it at the bottom of the page. The eye is naturally drawn to it.

There are many other ways to use the ReadSpeaker Suite of Learning Tools to aid your learning!

## Embedded Link:

Bimodal Presentation: <https://www.readspeaker.com/learn-more/report-benefits-bimodal-content-presentation/z>