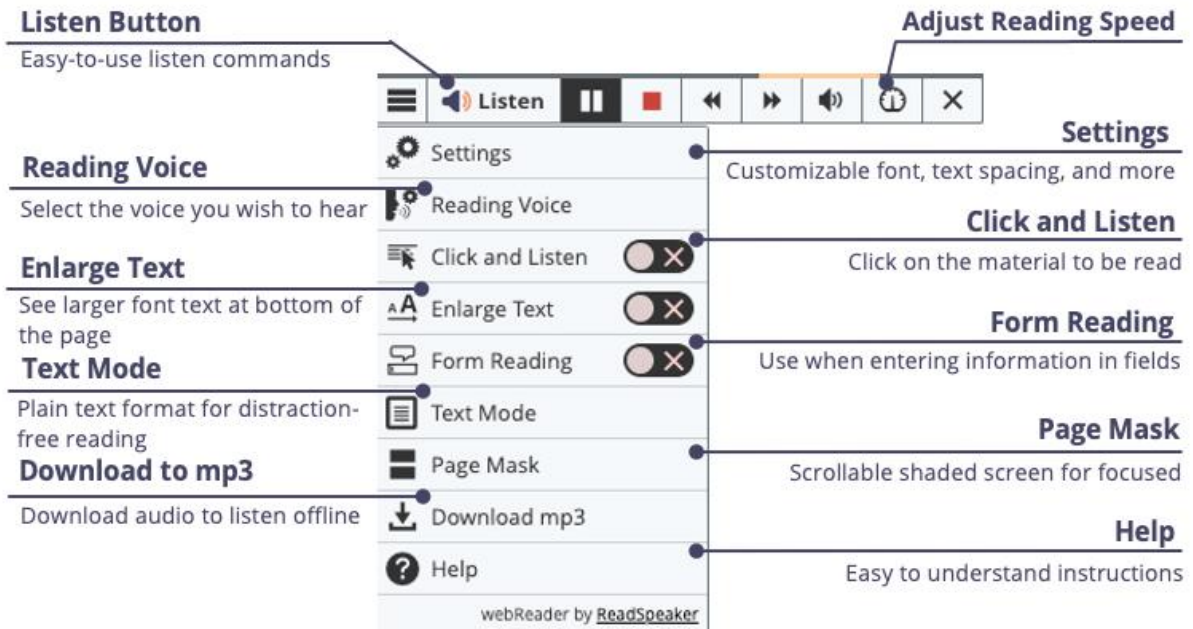


ReadSpeaker: How to Access It – webReader and docReader

What is the Listen button that I see?

The Listen button is a ReadSpeaker tool called webReader. When you click on it, it will read the text on the page. You can adjust the reading speed, change the highlighting colors, enlarge the text, use a page mask, download the file to mp3 for offline listening, and more! You will find it in Content, Assignments, Quizzes, and Discussion Threads.

ReadSpeaker webReader Expanded and Explained




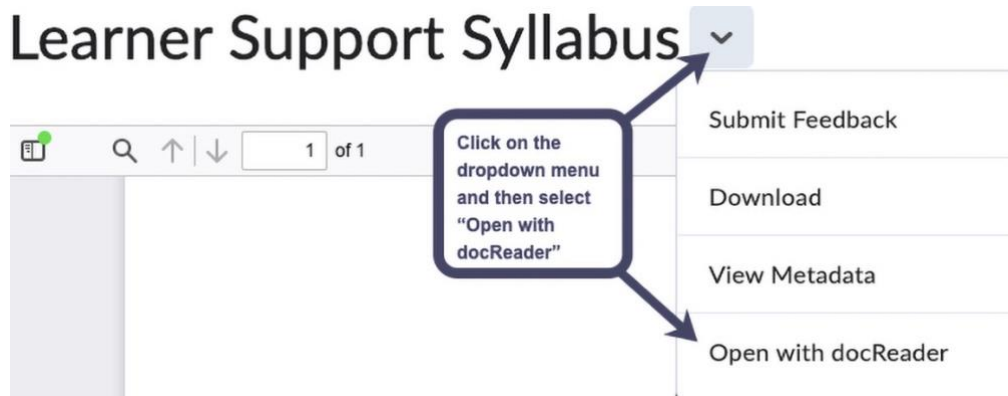
What do I do when I don't have a listen button, and it is a file?

If it is a file (MS Word, PowerPoint, Excel, ePub, PDF, etc.), you will use ReadSpeaker docReader. Before opening the document, you must determine which Brightspace view you use. There are currently three views: Classic View, New Learner Content, and New Learner Experience. Each will be discussed below, including how to open the document in the ReadSpeaker docReader interface.

Classic View of Brightspace

For the Classic View, follow these steps to open the ReadSpeaker docReader:


1. Click on the dropdown menu to the right of the file's title .
2. Click "Open with docReader."

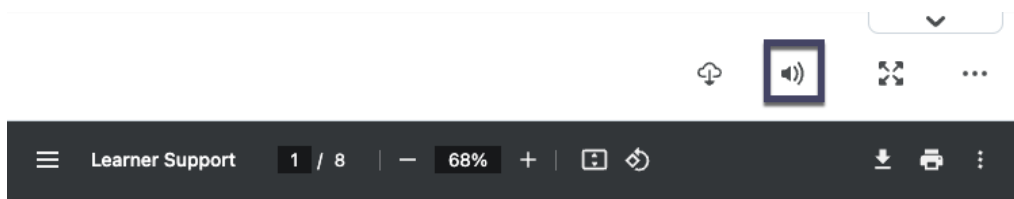


This will reload the document into a readable interface. It has many of the same tools as ReadSpeaker webReader.

New Content Experience and Instructor View of the New Learner Experience of Brightspace

To view the New Content Experience and the instructor's view of the New Learner Experience, follow the steps below to open ReadSpeaker docReader.

On the upper right-hand corner of the screen, click on the speaker .

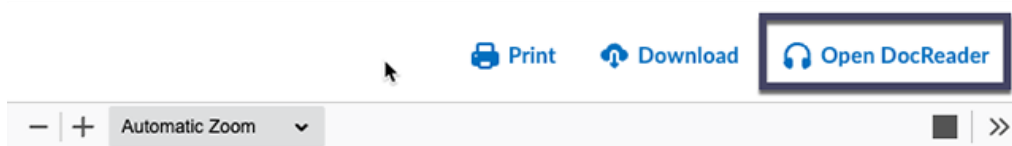


This will reload the document into a readable interface. It has many of the same tools as ReadSpeaker webReader.

Student View of New Learner Experience of Brightspace

For the student view of the New Learner Experience, follow the steps below to open the ReadSpeaker docReader.

On the screen's upper right-hand corner, click "Open DocReader."



This will reload the document into a readable interface. It has many of the same tools as ReadSpeaker webReader.

ReadSpeaker docReader Explained

The image shows a toolbar for ReadSpeaker docReader with various icons and text labels explaining their functions. The toolbar includes icons for sidebar, page navigation, listening, document view, zooming, and language selection. Annotations provide detailed instructions for each feature.

Show or hide the sidebar

Page navigation: next/previous page or choose a page to read

Easy to use listen commands

Choose layout or document view or text mode (plain text)

Expand or collapse the toolbar for more/less options

Help: Easy to understand instructions

Change the reading voice to match the document language

Print your document to printer or PDF

Download your document

Save current page as an mp3 file

Highlighter buttons: open highlighter toolbar and show/hide highlights

Reading ruler: a horizontal gray bar is shown over the page, which you can move along under the text as it is read

Page Mask: a moveable horizontal focus window to help you read along as you listen

Settings: Personalize highlighting colors, text mode settings, and more

Listen to selected text

Look up the definition of a word

Translate selected text to another language

Zoom in: make text larger (10%)

Zoom out: make text smaller (10%)

Fit to height: zoom to fill the height of the window

Fit to width: zoom to fill the width of the window